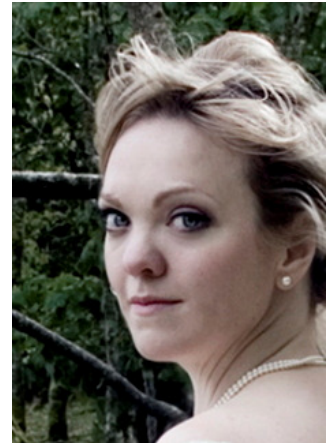


Madeleine Shaw Mezzo-soprano

Samling Scholar Madeleine Shaw studied at the RSAMD and the National Opera Studio supported by English National Opera. Madeleine was on the Young Singers Programme at English National Opera from 2006 to 2009.

Solo performances include Elgar **Sea Pictures**, Copland **In the Beginning**, Bach **B Minor Mass**, Vaughan Williams **Serenade to Music** at the Edinburgh International Festival, Bach **Christmas Oratorio** and Tavener **Lamentation for Jerusalem** in Jerusalem, Ramalah, Abu Gosh and Bethlehem. She has also sung in Duruflé **Requiem** and Haydn **Nelson Mass** and in an opera gala with the Royal Scottish National Orchestra. Madeleine also sang Mozart **Requiem** in Spain (John Eliot Gardiner) and Debussy **La Demoiselle Élue** with BBC National Orchestra of Wales (Thierry Fisher).



With ENO she has performed Annina **Der Rosenkavalier**, Beggar Woman **Death in Venice**, Second Lady **The Magic Flute**, Kate Pinkerton **Madama Butterfly**, Tessa (cover) **The Gondoliers**, Flora (cover) **La Traviata**, Annio (cover) **La Clemenza di Tito**, Lola (cover) **Cavalleria Rusticana** and in performances of songs by Kurt Weill and Samuel Barber at The Young Vic.

Her operatic roles with Opera East Productions include Female Chorus **The Rape of Lucretia**, Miss Jessel **The Turn of the Screw**, Mrs Herring **Albert Herring**, The Forester's Wife and The Owl in **The Cunning Little Vixen** and The Grand Duchess of Montebianco **A Dinner Engagement**. At RSAMD her roles included Nerone **L'Incoronazione di Poppea**, Meg Page **Falstaff**, Marcellina **Le Nozze di Figaro** and Un Pâtre **L'Enfant et les Sortilèges**. She has also performed the role of Juno, **La Calisto** and Medea, **Giasone** with The Early Opera Company and Christian Curnyn and Cretan Woman in **Idomeneo** at the Salzburg Spring Festival, in Berlin and Lucerne with Sir Simon Rattle. Recent engagements include Beggar Woman **Death in Venice** with La Monnaie, Brussels, 1st Witch in **After Dido**, a joint venture by ENO/The Young Vic of live music and film performance inspired by Purcell's **Dido & Aeneas** directed by Katie Mitchell and conducted by Christian Curnyn and Wellgunde **Götterdämmerung** with the Hallé Orchestra and Mark Elder.

Recent engagements include Maddalena **Rigoletto** for ENO, **Messiah** in Norway (Sandefjord Kammerchor), Spain (Oviedo Cathedral), at Bridgewater Hall and at the Royal Festival Hall, **The Three Cornered Hat** with the BBC National Orchestra of Wales and Duruflé **Requiem** at the Sage, Gateshead. Future engagements include Verdi **Requiem** in Halifax, her Royal Opera House, Covent Garden debut as Forester's Wife **The Cunning Little Vixen** and Adonella in Zandonai's **Francesca da Rimini** for Opera Holland Park. Madeleine will make her debut with La Scala, Milan in **Death in Venice** in 2011.